



HARNEY SOIL & WATER CONSERVATION DISTRICT
5-YEAR BUSINESS PLAN

July 2015-2020

Executive Summary

The purpose of the Harney Soil & Water Conservation District (SWCD) Business Plan (Plan) is to serve as a broad outline to inform and guide its directors, employees, partners, stakeholders, and the general public to respond to natural resource concerns, internal and external practices, and other factors that influence our strategies and actions. This Plan outlines our current organization structure, presents key goals and strategies, identifies key natural resource issues facing Harney County and describes the services, programs, and assistance that we provide to customers. This five year plan discusses resource concerns in our County and describes additional programs, employees and infrastructure that Harney SWCD might utilize to address these issues. Finally, this plan is used as the basis for developing annual work plans and directing funding requests.

Harney SWCD takes the lead in soil and water conservation through the following priority areas for resource concern investment: Range Health, Forest Health, Ecosystem Health, Ag Water Quality Management, and Ag Energy. These program areas of investment are based on accredited practices and sound science. They rely on voluntary cooperation with landowners (federal and private), public officials, private citizens, businesses, state and federal agencies and private organizations.

Harney SWCD believes in conserving, protecting, and improving soil, water and natural resources through our employees and directors abilities to plan, assist, and educate. It is our belief that concerns about water quality and quantity, soil erosion, functioning ecosystems, habitat management, and weed management be addressed while simultaneously respecting the rights of property owners.

Harney SWCD prepared this Plan based on input received by NRCS at the Local Work Group, Harney Electric, Bureau of Land Management, Malheur National Wildlife Refuge, and Oregon Association of Conservation Districts (OACD). The Plan has been formatted so it outlines both broad long-range and specific short-term strategic goals to benefit Harney SWCD, our cooperators, constituents, and the communities we serve.

Table of Contents

Introduction & Overview.....	3
Harney County Profile	4
Leadership & Governance	6
Strategic Direction	10
Harney SWCD Goals & Objectives	13
Harney SWCD Programs	16
Current Services, Infrastructure and Practices	20
Partnerships and Recent Collaborations	22
Appendixes:	
Appendix A: General Powers of SWCD Directors.....	27
Appendix B: Statutes and Administrative Rules	29
Appendix C: Acronyms used in this Business Plan	30
Appendix D: Current Fiscal Year Budget	31

Introduction and Overview

This Business Plan was developed by Harney SWCD Board of Directors and staff to guide the programs, activities, and operations of the Harney SWCD and provide a document that serves as a “road map”. This Plan also serves as an internal document that directs the Harney SWCD annual budget and work plan. It will be reviewed annually for necessary updates to reflect changing circumstances and emerging issues. This current long-range Business Plan will cover July 1, 2015 – June 30, 2020.

Harney SWCD was organized in 1972 under the Oregon Soil and Water District Law Oregon Revised Statute (ORS) 568.210-780. All Oregon soil and water conservation districts are classified as special districts under ORS 198.010 through ORS 198.955. This means that the Harney SWCD is not a County or State entity, as many may assume. The Harney SWCD is administered by seven locally elected volunteer directors representing 5 zones and 2 at-large positions. Harney SWCD operations and programs are funded by grants, Oregon Department of Agriculture assistance, and fundraising. A history of the development of conservation districts in Oregon and throughout the nation is summarized in Appendix B. Harney SWCD encourages public attendance at its meetings and participation in its activities and services. Monthly Board meetings are open to the public and are held at 4:30 pm, on the 4th Thursday of every month at the Harney SWCD office or other designated venue. An annual meeting that includes a dinner and a guest speaker is held in February each year.

Currently, Harney SWCD Priority Areas for Resource Concern Investment include: Range Health, Forest Health, Ecosystem Health, Ag Water Quality Management, and Ag Energy. Our individually staffed programs offer assistance to private landowners of Harney County who wish to voluntarily conserve and/or restore natural resources on their land by providing:

- **Technical expertise** – land management and conservation practices, soil and water information, invasive vegetation control, improvements to wildlife habitat and water quality, and fish habitat and population information.
- **Funding opportunities** – grants, programs, and coordinated efforts with other agencies are available to assist with habitat restoration and other natural resource related projects.

The Harney SWCD is an Equal Opportunity Employer, providing services to the public without regard to race, color, national origin, religious preference, gender, age, or disability.

Harney County Profile

Demographics

The population of Harney County was 7,126 in 2014, according to data from the U.S. Census Bureau. This represents a 4 percent decrease from 2010 and a population density of 0.7 persons per square mile. 61% of the population base is located within the city of Burns/Hines.

Topography

Harney County is situated in the south eastern corner of Oregon. The county includes the furthestmost northwestern tip of the Great Basin. The county is geographically in the Pacific Northwest, although it represents little of what many people imagine the region to be like.

Harney County covers vast amounts of land from Nevada and halfway up to Washington. The county is one of the largest in the United States, covering 10,133 square miles, an area that is larger than some East Coast states. The geography of the county is very diverse, but a common trait is that it is very arid. The counties vast and rugged landscape includes snow covered summits, green forests, lush valleys and meadows to sagebrush and juniper dotted plains.

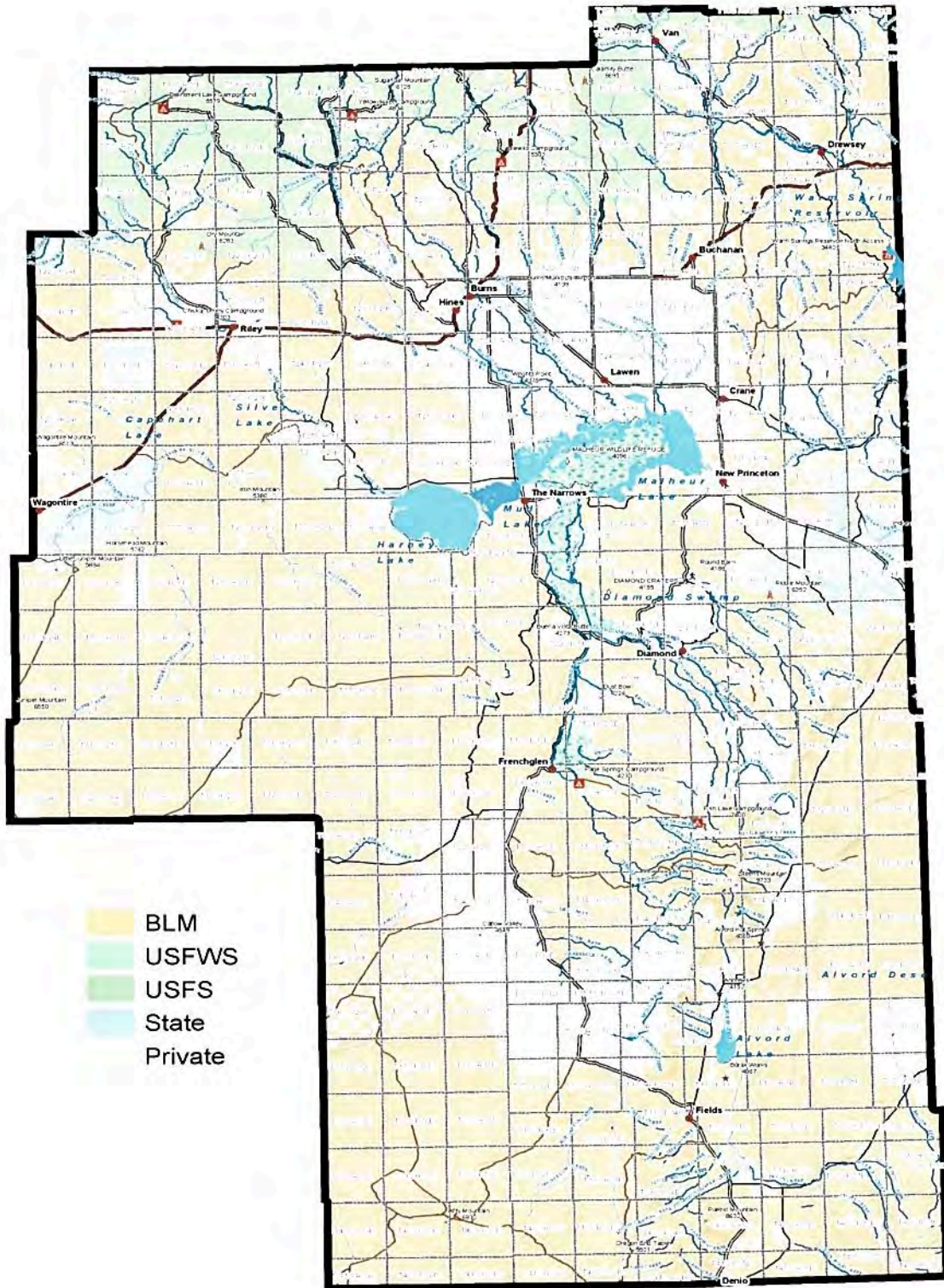
Land Use

Ownership of Harney County is approximately 25% private and 75% public (Federal and State). There are eight watersheds (8-digit HUC) within Harney County. These watersheds are the Upper Malheur, Silvies, Silver Creek, Harney/Malheur Lakes, Donner und Blitzen, Alvord Lake, Guano, and Thousand Virgin watersheds.

Land cover types for the eight watersheds are approximately 64% rangelands, 22% forest, and 9% crop or pasture land, with the remaining 5% covered by wetlands or water. Privately owned lands encompass 1.1 million acres of range; 410,500 acres of pasture, crop, and hayland; and 130,400 acres of industrial and non-industrial forest.

Today, as in the past, cattle ranching, timber and wood products, and irrigated hay are the major economic enterprises in the county. Climatic characteristics of this semi-arid region of the northern Great Basin limit the types of crops that can be produced. For this reason, irrigated grass hay and pasture and alfalfa hay dominate the agronomic operations.

Land Ownership



Leadership and Governance

The Harney SWCD is one of 45 conservation districts in Oregon. Conservation districts are defined in Oregon law as political subdivisions of state government. Harney SWCD is not a state agency. Rather it is classified as a municipal corporation, a form of local government which is required to follow many of the same laws that govern state agencies and special districts. It is specifically governed by ORS

568.210 to 568.890 and ORS 568.900 to 568.933. See Appendix E for the specific powers and authorities granted to districts. Appendix F lists other statutes and administrative rules to which Harney SWCD is subject.

The Oregon Revised Statutes (ORS) that established and govern Oregon's SWCDs (except the federal tribal Tiicham Conservation District) was significantly revised by the 2009 Legislative Assembly under House Bill 2082. The origin of the House Bill was a collaborative effort among the Oregon Association of Conservation Districts, member Conservation Districts, and the Oregon Department of Agriculture. It was designed to address the evolving challenges and opportunities presented to today's SWCDs that were not envisioned when the Statute originated, and to eliminate antiquated provisions in the previous editions.

In addition to the general purpose of SWCDs under ORS 568.225 in the previous editions, the following was added: **"promote collaborative conservation efforts to protect and enhance healthy watershed functions, assist in the development of renewable energy and energy efficiency resources"**.

Board of Directors

The current elected Board of Directors of Harney Soil and Water Conservation District are:

• Carol Dunten	Chairman	Zone 3
• Louis P. Molt	Vice Chairman	Zone 1
• Andrew Shields	Director	Zone 5
• Robert Greisen	Director	Zone 2
• Berry Anderson	Director	Zone 4
• Pat Sharp	Director	At Large
• Roxane Bailey	Treasurer	At Large

Directors are elected by the electorate of Harney County at the November General Election, which is held during even-numbered years. Director positions are elected in staggered terms to provide continuity on the board and maintain consistent operations. The Harney SWCD Board may appoint a person to fill a board vacancy between elections for the duration of that position's term. Five of the seven positions are classified as zone positions and must meet the zone requirements and terms of office as specified in ORS 568.560 as follows:

“Zone directors must own or manage 10 or more acres of land in Harney County, be involved in the active management of that property, reside within the boundaries of Harney County, and be a registered voter.”

An individual may serve as a zone director in lieu of land ownership or management requirements if the individual resides within the zone that is represented, has served at least one year as a Harney SWCD Director or Associate Director and has a conservation plan approved by the Harney SWCD Board. The other two positions are at-large positions. To qualify for an at-large position, a person must reside in Harney County and be a registered voter. No land ownership or management requirements are needed for an at-large position, which is also governed by ORS 568.560.

An individual director has power only when acting as a part of the Harney SWCD Board. Individual board members may be delegated authority or power to act on behalf of the Board in specific, limited tasks. This authority or power is granted through board action (resolution, motion, policy, etc.) and must be recorded in the meeting minutes.

The Harney SWCD Board works cooperatively as a unit to plan and oversee implementing Harney SWCD programs. As a representative of the Harney SWCD Board, opinions expressed publicly by individual board members should be consistent with established board policy, not the individual's personal agenda or opinions.

ORS 568.545 requires all SWCDs to select a Chair and Treasurer from among its directors. Harney SWCD may elect other officers as desired.

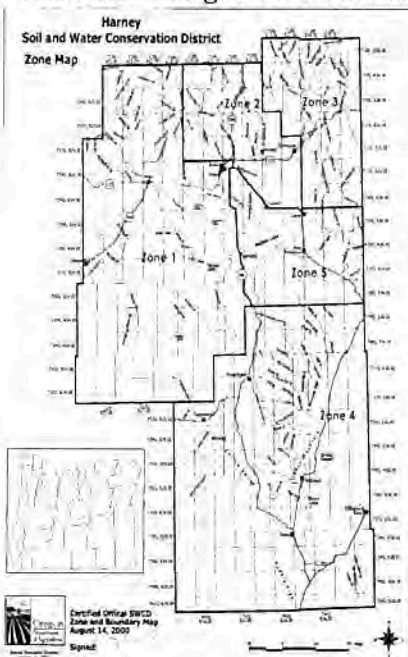
The **Chair** is granted the responsibility to represent Harney SWCD with other districts, agencies, associations, partners, organizations, legislators, and property owners consistent with the policies, plans, and interests of Harney SWCD. The chair will also conduct regular and special meetings of the Board.

A **Vice-Chair** has been given the authority to act as the Chair in case of the absence or unavailability of the Chair.

The **Treasurer** is the custodian of all Harney SWCD records, minutes, contracts, and other official documents.

Committees are an effective way for Harney SWCD to plan and implement Harney SWCD functions. They can be comprised of board members, associate directors, Harney SWCD advisors, representatives of cooperating agencies and associations, or interested citizens. Currently the Harney SWCD does not have any standing committees.

The Harney SWCD does have various **ad hoc committees**, which are charged with specific tasks over a specific time period. Ad hoc



committees are then disbanded after the assigned task and/or timeframe is completed.

Board of Director's Calendar of Events:

January	Full Board with Facilitation: Review/Revise Business Plan Ad Hoc Committee: Review/Revise Personnel Policies
February	Annual Meeting
March	Adopt Business Plan revisions Adopt Personnel Policy revisions Ad Hoc Committee- CCAA Steering Committee
April	Produce Draft of Annual Work Plan Begin Annual Budget
May	Budget Committee Reviews/Approves Budget
June	Adopt Annual Work Plan Fiscal Year Ends
July	Fiscal Year Begins Summer Recess
October	Produce Annual Report
November	Approve Annual Financial Audit
December	Winter Recess

Strategic Direction

Mission

To conserve, protect, and develop soil, water and other related resources for the economic and environmental benefit of the people of Harney County.

In carrying out our mission, Harney SWCD works, coordinates, and cooperates with a diverse cross section of stakeholders to ensure that the SWCD is taking a balanced approach to conservation efforts within Harney County.

Vision

Harney SWCD is the leader in maintaining and improving soil, water and natural resources in Harney County. The District provides technical assistance, education, and outreach to a variety of stakeholders. The District delivers a diverse and fiscally stable range of programs that serve all residents of Harney County while encouraging a vibrant economy.

Values

The values Harney SWCD strives to meet are:

- provide the proper administration of Harney SWCD funds and practice best management practices that demonstrate fiscal responsibility
- strive for excellence and quality in all areas of program responsibility
- demonstrate the economic importance of agriculture, natural resources, and rural communities
- obtain the respect, trust, confidence and confidentiality of all property owners/operators private property rights
- encourage the stewardship of soil and water
- utilize the application of science and research
- respect the decisions and knowledge of property owners/operators
- encourage managed use of natural resources

Guiding Principles

The following guiding principles direct the Harney SWCD in how it conducts business, relates to customers, and interacts with the public. The Harney SWCD will:

Respect

- People
 - o Ensure that interested parties within and outside the organization are treated with fairness and equality.
- Ideas
 - o Ideas from interested parties and stakeholders will be considered and addressed in a professional and unbiased manner.

Commitment

- To resources
 - o Ensure that natural resource health and sustainability benefits from decisions generated from the group.
- To landowners

- Accurately represent landowners and serve as an advocate for compatible agriculture production and natural resource use enhancement.
- Consider landowner's concerns and suggestions when making landscape scale decisions.
- Maintain landowner privacy and respect private property rights.
- To ourselves
 - Uphold the standard of maintaining a highly functional, efficient, and evolving District that progresses in a positive direction.
- To education and outreach
 - Stay up to date on current science that will help the group make educated decisions.
 - Provide educational and outreach opportunities to interested parties outside the SWCD (general public, other professionals, students, etc).

Stewardship

- Making informed decisions to promote sustainability of natural resources (animal and plant) while maintaining the agricultural focus of the communities and land within.
- Conservation strategies will integrate local, regional, and national needs.

Priorities

- **Local Governance**
 - Lead and support landowner, land user, local community, and government agency efforts to collectively identify natural resource issues of concern, review alternative solutions to address these issues, and undertake local efforts to resolve priority issues using voluntary mechanisms.
- **District Capacity**
 - Develop and maintain the political and organization capacity to fully exercise Harney SWCDs statutory and organization responsibilities and identify areas to diversify funding opportunities to ensure future longevity.
- **Community Outreach**
 - Promote efforts to enhance local community understanding of ecological systems, the social systems directly dependent upon these natural systems, and the political and organization systems developed for management of natural resources within Harney County.
- **Landscape Planning**
 - Promote individual, local, regional, state, tribal and national planning efforts that recognize, and manage for, the interconnected elements of natural systems and seek management approaches for the natural resources within the Harney SWCD service area. These efforts are critical to the long-term sustainability of family ranch operations.
- **Coordinated Implementation**
 - Lead the voluntary implementation of conservation efforts that seek to simultaneously protect and enhance the long-term productivity of the Harney SWCD's natural resource base while providing for the long-term natural resource conservation objectives of landowners and land users, protecting the established rights of individual landowners and land users, strengthening the long-term health of local economies, and protecting the long-term public interest of our county.

Planning Process and Partners

This business plan is a product of attempting to compress the various action and strategic action plans that the SWCD has developed or is involved with. A business plan will be a beneficial planning tool for the Board and staff, and serve as a valuable communication tool for our constituents.

The Priority Areas for Resource Concern Investment within this long-range plan were developed over the course of several years. Priority watersheds and conservation issues have been established by the board of directors through watershed assessments, resource management plans and through consultation with our partnering agencies. Practices were produced by staff under direction of the board of directors to address these priority concerns. Major focus in any planning process for the district must contain sustainable funding for district operation and staffing.

Many of these concerns have been addressed in other agency and stakeholder management plans, including but not limited to: *NRCS Rapid Watershed Assessment Profiles*, *NRCS Local Work Group*, *Greater Harney Basin Agricultural Water Quality Management Area Plan*, *Malheur River Basin Agricultural Water Quality Management Area Plan*, *Oregon Department of Fish and Wildlife Conservation Strategy*, and watershed assessments and action plans prepared by the Harney County Watershed Council and the Malheur Watershed Council.

Harney SWCD Goals and Objectives

Harney SWCD's *goals* provide a broad, long-term visioning platform to develop Harney SWCD *objectives*. This platform is known as the SWCD Priority Areas for Resource Concern Investment. Harney SWCD *objectives* provide more detailed, current and future-looking statements to guide our annual work plans and staff managed programs.



Goal 1: Sustain and enhance current programs that provide technical and financial assistance to property owners, partners, operators and residents.

Objectives:

- Maintain current level of service of existing programs and adapt them to current needs. Current Initiatives include:
 - Greater Harney Basing Ag Water Quality Management Program
 - Harney County Cooperative Weed Management Program (HCCWMA)
 - Harney County Candidate Conservation Agreement with Assurance (CCAA) for Greater sage grouse
 - Ag Energy Rebate Program in partnership with Harney Electric Cooperative (HEC)
 - Education and Outreach Activities
- Expand current existing program capacity as opportunities become available

Goal 2: Develop and maintain the political and organizational capacity to fully exercise Harney SWCD statutory and organizational responsibilities, while identifying areas to diversify funding opportunities.

Objectives:

- Identify how to accommodate growth within the footprint of the USDA Service Center
- Acquire the needed equipment to run programs efficiently and successfully
- Provide Harney SWCD vehicles for applicable staff
- Secure additional financial stability through grants, contracts, fundraisers, donations, bequests, endowments, trust funds, gifts, and/or a tax rate

Goal 3: Continue to administer Harney SWCD operations to be legally accountable and fiscally responsible.

Objectives:

- Implement the Board-approved Harney SWCD planning process
- Produce and maintain the annual work plan
- Develop and approve the Harney SWCD annual operating budget
- Complete financial audit per Oregon Revised Statute (ORS) 568, Section 297.425
- Review the Business Plan and update as necessary
- Conduct monthly staff, committee, and board meetings
- Provide orientation, development, and training for staff
- Develop needed administrative policies and process
- Recruit Board members as needed
- Hold an Annual Meeting
- Maintain a working relationship with agricultural organizations, watershed councils, cities, county, state, and federal entities
- Perform personnel, fiscal, and contract management, according to the Local Contract Review Board (LCRB) approved rules

Goal 4: Lead and support landowner, land user, local community, and government agency efforts to collectively identify natural resource issues of concern, review alternative solutions to address these issues, and undertake local efforts to resolve priority issues using voluntary mechanisms. (As workload and funding allows)

Objectives:

- Promote voluntary conservation efforts versus regulatory approaches to conservation
- Participate in Harney County Restoration Collaborative (Forest Health)
- Participate in Harney Basin Wetlands Initiative (Ag Water Quality Management & Ecosystem Health)
- Participate in local, state, and region groundwater discussions to develop an understanding of the necessary resources to ensure water availability to meet program goals (Ag Energy)
- Coordinate with USDA-ARS on landscape level data collection to ensure monitoring and inventory efficiencies (Range Health & Ecosystem Health)

Goal 5: Promote efforts to enhance local community understanding of ecological systems, the social systems directly dependent upon these natural systems, and the political and organization systems developed for management of natural resources within Harney County.

Objectives:

- Provide producer technical trainings and outreach meetings throughout the county that incorporates components of Goal #5

Goal 6: Promote individual, local, regional, state, tribal and national planning efforts that recognize, and manage for, the interconnected elements of natural systems and seek management approaches for the natural resources within the Harney SWCD service area. These efforts are critical to the long-term sustainability of family ranch operations.

Objectives:

- Participate as a Cooperating Agency, as necessary to ensure landscape planning efforts include private landowners interests
- Acquire the needed equipment to run programs efficiently and successfully
- Provide Harney SWCD vehicles for applicable staff
- Secure additional financial stability through grants, contracts, fundraisers, donations, bequests, endowments, trust funds, gifts, and/or a tax rate

Goal 7: Lead the voluntary implementation of conservation efforts that seek to simultaneously protect and enhance the long-term productivity of the Harney SWCD's natural resource base while providing for the long-term natural resource conservation objectives of landowners and land users, protecting the established rights of individual landowners and land users, strengthening the long-term health of local economies, and protecting the long-term public interest of our county.

Objectives:

- Conduct assessments and formulation action and conservation planning
- Form and maintain partnerships with various agencies, tribes, conservation organizations and foundations
- Set strategic priority work areas
- Implement projects and practices
- Continue monitoring projects

Harney SWCD Programs

Harney SWCD staff managed programs are the foundation and source of all services provided to Harney County public, operators and partners. Harney SWCD program *goals* are the general conditions that our programs strive to meet regarding a particular *natural resource concern*. The specific *objectives* of program goals provide the basis of annual work plans. Due to the inherent interconnectedness of natural resources, multiple Harney SWCD programs address similar natural resource concerns although often using different strategies.

Water Quality Program

Goal: *Enhance water quality to meet local, state and federal standards by providing water quality baseline information, technical resources and BMP implementation.*

Program overview: The Water Quality Program currently conducts a variety of on-the-ground activities to understand, improve and/or protect water quality conditions of Harney County's streams and rivers. There are two Local Management Areas (LMAs) located within the county: Greater Harney Basin Ag Water Quality Management Area and the Malheur Ag Water Quality Management Plan Area.

Within both LMAs, the SWCD will strive for:

Implementation of agricultural BMPs such as exclusion fences, riparian restoration, heavy use area protection, etc.

Maintenance or improvement of desirable streamside vegetation

Future areas of growth will focus on water quality demonstration area in the within the Silvies River watershed. We may also expand our capacity to fulfill the requested demonstration area implementation assistance to agricultural landowners.

Natural Resource Concerns associated with Water Quality:

- Water bodies in Harney County that are classified as Department of Environmental Quality (DEQ) 303(d) water quality limited or those that frequently exceed water quality standards
- Lack of baseline water quality data
- Water conditions that adversely affect beneficial uses such as human recreation, fish populations, and drinking water
- Water temperature exceeds state standards in a number of stream reaches
- Sediment from human activities (roads, irrigation, under-sized culverts, off-road vehicles) has degraded aquatic habitat
- Bacteria source reduction, management and control

Water Quality Program Objectives:

- Advance riparian habitat protection, enhancement, and establishment based on site capability
- Develop and carry out strategies to improve DEQ 303(d) listed water bodies for temperature, bacteria, dissolved oxygen, habitat modification, and sediment.
- Develop and carry out strategies to address the Greater Harney Basin Agricultural Water Quality Management (AGWQM) Area Plan and Strategies
- Continue to gather, evaluate and utilize baseline riparian condition using the State and

- Transition Models as well as Proper Functioning Condition (PFC) Assessment methodologies
- Develop and carry out water quality education activities for Harney SWCD
- Develop conservation and restoration projects for property owners and managers
- Establish new demonstration areas and sites
- Promote current and relevant BMPs
- Assist landowners with grants, permits and implementation logistics
- Assist the NRCS with implementing Farm Bill conservation programs
- Assist with requests for information or services

Harney County Candidate Conservation Agreement with Assurances (CCAA) for Greater Sage grouse

Goal: *There are three goals this programmatic CCAA is designed to meet:*

- *Provide participating landowners assurances that current ranch and land management practices covered by this CCAA will continue in the event sage-grouse is listed under the ESA, provided that the CCAA is being implemented as agreed upon.*
- *Promote CMs that reduce or remove threats to sage-grouse through proactive ranch and land management, providing comprehensive conservation to meet the CCAA standard.*
- *Provide an ecological approach to maintain current sage-grouse habitat and to improve habitat that is not meeting conservation objectives, as identified in enrolled landowners' site specific plans.*

Program overview: A CCAA is a voluntary agreement whereby landowners agree to manage their lands to remove or reduce threats to a species that may become listed under the ESA. In return for managing their lands to the benefit of a species at risk, landowners receive assurances against additional regulatory requirements should that species ever be listed under the ESA. The programmatic design of this agreement, its “umbrella” nature, streamlines the process for landowner enrollment, as follows:

- Under a programmatic CCAA, the United States Fish and Wildlife Service (FWS) will issue Harney Soil and Water Conservation District (SWCD) an Enhancement of Survival (EOS) permit pursuant to section 10(a)(1)(A) of the ESA for a period of 30 years.
- The SWCD, in coordination with the FWS and other partners, will then work with willing landowners to develop a Site Specific Plan (SSP) for each landowner/parcel, and issue a Certificate of Inclusion (CI) for coverage under the EOS permit.

Future areas of growth will focus on capacity and sustained funding needed in anticipation of a final ESA listing decision by the FWS.

Natural Resource Concerns associated with CCAAs:

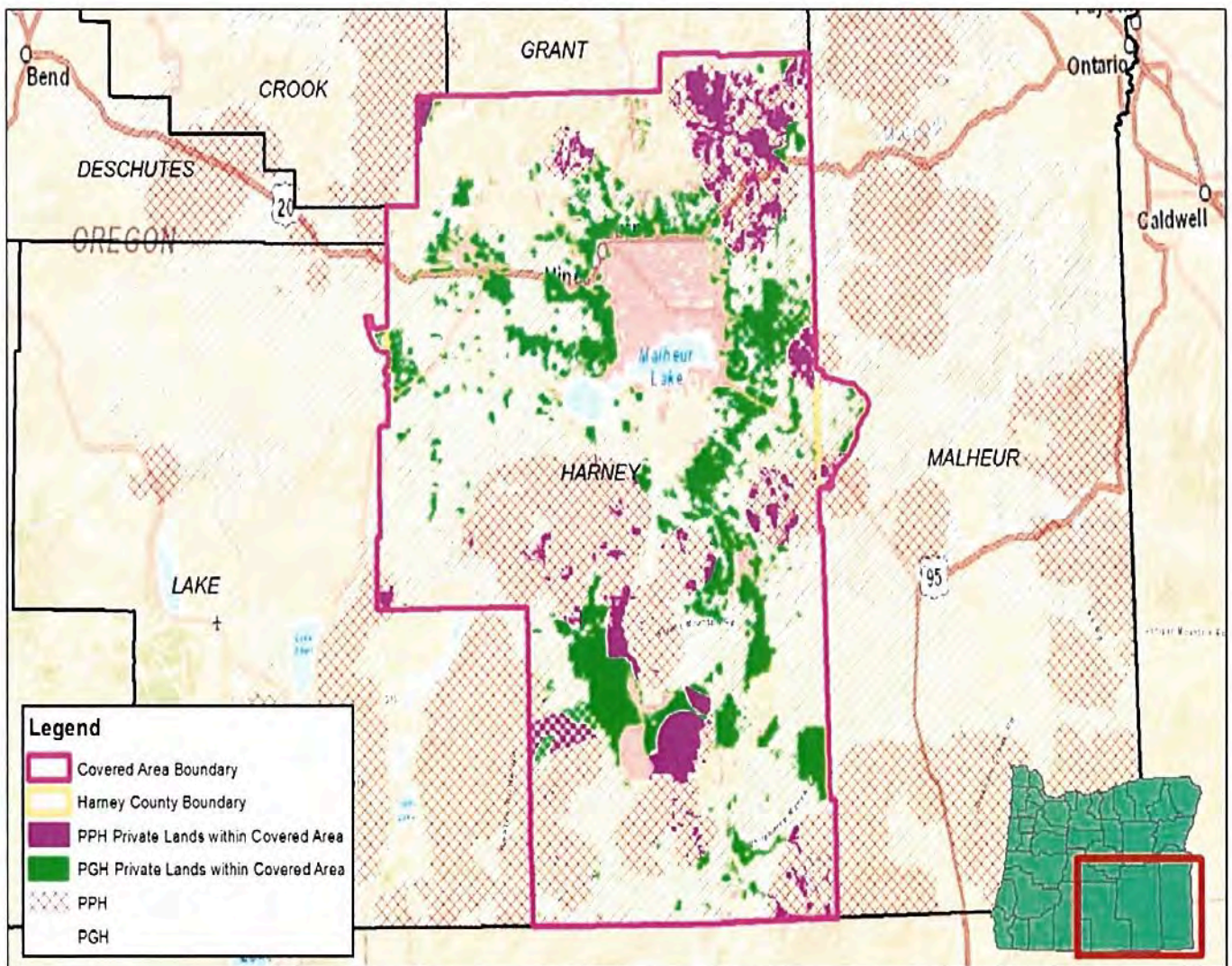
- The long term persistence of sage-grouse will depend on maintenance of intact shrub steppe landscapes as well as associated riparian and meadow habitats. Sage-grouse are landscape-scale species and the destruction and fragmentation of their habitat has contributed to significant population declines throughout its range over the past century. If current trends persist, many local populations may disappear in the next several decades, with remaining fragmented populations vulnerable to extinction.
- Habitat fragmentation is the most significant threat to the long term persistence of sage-grouse.

- The threats to sage-grouse in Harney County are: wildfire in low elevation rangeland, juniper encroachment in mid-high elevation rangelands, and invasive species.

CCAA Program Objectives:

- Assess habitat condition on enrolled properties
- Identify threats to sage-grouse
- Develop conservation measures through Site Specific Plans (SSPs) to address threats
- Assist with implementation of conservation measures and practices
- Monitor progress

**Harney Soil and Water Conservation District
Greater Sage-Grouse Candidate Conservation Agreement with Assurances
Covered Area**



Only acres of PPH Private & PGH Private within the covered area boundary are included in our analysis.

Agricultural Energy Efficiency

Goal: *Target savings of 1,000,000 kWh savings to agricultural producers/HEC end users on wheel line and center pivot irrigation systems.*

Program overview: The Agricultural Energy Efficiency program targets irrigators within the Harney Electric Cooperative (HEC) service areas of Harney County, Oregon and Humboldt County, Nevada. The program is designed to provide irrigation water management practices like replacement of sprinklers, nozzles, and other hardware on existing irrigation systems. Another popular component of the programs is cost share on Variable Frequency Drives (VFDs). A VFD is a type of motor controller that drives an electric motor by varying the frequency and voltage supplied to the electric motor. The installation typically results in a large economic savings to the producer as well as significant energy delivery savings to the cooperative.

Future areas of growth will focus on irrigation water management practices located within the Oregon Water Resources identified critical groundwater areas of Harney County.

Natural Resource Concerns associated with Agricultural Energy Efficiency:

- Aquifer depletion
- Soil erosion
- Nutrient management

Agricultural Energy Efficiency Program Objectives:

- Energy conservation to help save fuel, improve efficiency of water use, maintain production, and protect soil and water resources by more efficiently using fertilizers and pesticides

Current Services, Infrastructure and Practices

Services

Harney SWCD provides direct assistance, in an office or field setting, to property owners and operators concerning natural resource issues within the scope of our Mission. This service is provided free from connections to Federal or State programs or regulations, although information may be provided on those programs or regulations when applicable. Please see the Harney SWCD Programs chapter for details of our services. An overview of our services includes but is not limited to:

- field visits upon request to view and assess livestock operations, stream-bank erosion, field erosion, riparian condition, invasive plant species, stream condition
- Geographic Information System (GIS) computer information including prints of land area from Farm Service Agency (FSA) aerial imagery, tax lot maps, soil maps, and United States Geological Survey quadrangle maps of Harney County
- conservation planning assistance to address natural resource concerns
- Conservation equipment rental fleet, including but not limited to portable solar livestock watering systems, rangeland drills, and portable weed sprayers
- workshops and presentations on natural resource issues or programs
- technical help with approved engineering plans for conservation practices
- facilitation of the locally-led process, the stakeholder work session, to address and identify critical natural resource issues, critical geographic areas of concern and recommend other state, local or private programs that are available
- assistance in obtaining funding from programs or grants to address natural resource issues
- education, current information and recommendations regarding local invasive species
- control services for certain high priority invasive species as funding allows

Facilities

Harney SWCD is housed in a rented facility located within the USDA Service Center at 530 Hwy 20 South, Hines, OR 97738. The NRCS field office and the Farm Service Agency offices are located in the same facility. Currently this office provides office space for 4 Harney SWCD staff and a shared conference room. Many office utilities such as printers, copiers, phone, technical software and internet are shared expenses with NRCS.

Employee Monitoring and Evaluation

All Harney SWCD staff receives an employee evaluation after a 6-month trial service period of employment. This trial service period is part of the selection process used to confirm the initial employment decision. Subsequent evaluations follow at least once a year. Employee performance evaluations provide important communication, feedback, and goal-setting between employees and their supervisor. As additional personnel are needed, Harney SWCD will recruit appropriately educated, competent individuals to fill personnel needs. All new employees will be given orientation training upon employment with Harney SWCD. This training will be on the job and be conducted or arranged by the appropriate supervisor.

Harney SWCD encourages continued education and training for employees to enhance job

performance and assist in potential career advancement within Harney SWCD. If necessary, detailed training plans providing for the developmental opportunities will be recorded. Training will also be provided to meet Harney SWCD needs to be kept current of new procedures.

Finances

Harney SWCD applies for and receives various competitive based grants throughout the year for all of its programs and activities. Harney SWCD receives base funding annually from the Oregon Department of Agriculture (ODA) to partially support a Watershed Technician and jointly funded partnership position with Ducks Unlimited & NRCS position that focus on technical and financial assistance to maintain or improve water quality within the Greater Harney Basin Ag Water Quality Management Area.

Harney SWCD Staff

The Harney SWCD staff currently consists of a District Manager, Sage grouse Biologist, Range Specialist, Administrative Assistant, and Professional On-Call Staff.

- District Manager (1 FTE): Responsible to conduct the business of the District as guided by the Board of Directors. Oversight on all operations of the District's activities, project management and finances. Responsible for human resource management and task delegation. Administration and approval over grant applications and funding, and bookkeeping and budgeting. Reports District's accomplishments. Oversees all phases of organizational activities.
- Sage grouse Biologist (1 FTE): Develops Site Specific Plans (SSPs) for management of sage grouse habitat located in Preliminary Priority Habitat (PPH) and Preliminary General Habitat (PGH). Promote and seeks participation in USDA programs. Seeks funding for projects. Provide outreach for available programs to private landowners. Provide technical assistance to private landowners. Provide project management. Report accomplishments.
- Range Specialist (0.50 FTE): Develops Site Specific Plans (SSPs) for management of sage grouse habitat located in Preliminary Priority Habitat (PPH) and Preliminary General Habitat (PGH). Promote and seeks participation in USDA programs. Seeks funding for projects. Provide outreach for available programs to private landowners. Provide technical assistance to private landowners. Provide project management. Report accomplishments.
- Administrative Assistant (0.50 FTE): Provide support primarily to District Manager, and other staff as needed. Assist facilitation of various meetings. Provide point of contact for general public requests and questions. Responsible for SWCD Equipment Rental Program. Report accomplishments to a variety of entities. Create fact sheets and press releases, displays and public outreach.
- Professional On-Call Staff (As necessary to meet District mission): Provide the SWCD flexibility in their program delivery depending on the SWCD Priority Areas for Resource Concern Investmen

Partnerships and Recent Collaborations

The Harney SWCD works with agencies and individuals as partners in our efforts to achieve our vision. Various memorandums of agreement and/or understanding, working agreements, intergovernmental agreements and informal arrangements, formalize the partnerships. The agreements outline the responsibilities of each partner and identify the types of assistance, resources, and support each will provide to accomplish common conservation goals. Below is a list of current partners, a description of the partnership between Harney SWCD as well as one or more recent collaborations between that partner and the Harney SWCD.

Agricultural Research Service (ARS)

Harney SWCD works with ARS scientist on complex natural resource issues in Harney County. SWCD relies heavily on the newest science from the team at ARS to guide the SWCD in designing and developing projects.

Recent Collaborations:

- Harney County Candidate Conservation Agreement with Assurances (CCAA) for Greater sage grouse

Bureau of Land Management (BLM)

Harney SWCD works with BLM resource staff on many natural resource issues on private and public land in Harney County including invasive plant management, landscape level management, and habitat restoration. BLM provides a significant portion of the funding for the Harney County Cooperative Weed Management Area (HCCWMA) through grants and cooperative agreements. The SWCD to manage those funds as the designated fiscal agent for the HCCWMA.

Recent Collaborations:

- Oregon Greater Sage Grouse Resource Management Plan Environmental Impact Statement (EIS) Cooperating Agency
- Otis Moffett Tables
- Alkali Allotment
- CCA/CCAA Implementation

Farm Service Agency (FSA)

Harney SWCD shares office space with USDA Farm Service Agency (FSA) and USDA Natural Resources Conservation Service (NRCS). FSA's mission is to stabilize farm income, help farmers conserve land and water resources, provide credit to new or disadvantaged farmers and ranchers, and help farm operations recover from the effects of natural disaster. FSA provides aerial photos for use in conservation planning work done by Harney SWCD and NRCS.

Harney County Government

Harney SWCD provides technical consultation, recommendations and assistance as well as collaboration on projects with Harney County and government officials such as County Commissioners. Harney SWCD also provides technical assistance to City governments and their associated constituents.

Recent Collaborations:

- Harney SWCD staff collaborate with County Government on resource and policy decisions affecting landowners, like Sage grouse
- Harney SWCD works closely with to share information, resources and work on vegetation control projects together around the County

Harney County Cooperative Weed Management Area (HCCWMA)

Harney SWCD works with partners of the HCCWMA to share information, direct strategy and discuss priorities of invasive species management within Harney County.

Recent Collaborations:

- Harney SWCD staff serve on the HCCWMA and cooperate with local partners within the Harney CWMA to coordinate County weed control priorities
- Harney SWCD is the Local Contracting Agency for the HCCWMA
- Harney SWCD serves as the fiscal agent under a Memorandum of Agreement (MOA), reviewed annually

Harney Electric Corporation (HEC)

Harney SWCD works with the local electrical cooperative within the HEC service area of Harney County, Oregon and Humboldt County, Nevada to implement the Save Water Save Energy program on wheel line and center pivot irrigation systems.

High Desert Partnership (HDP)

Harney SWCD serves as a partner in the local collaborative sub-committees of the High Desert Partnership: Harney Basin Wetlands Initiative and the Harney County Restoration Collaborative.

Malheur National Wildlife Refuge (MNWR)

Harney SWCD works with the MNWR in a variety of ways. SWCD submits technical assistance, restoration and monitoring grants for MNWR that are mutually beneficial to work the SWCD is undertaking on private lands and/or fits within our organizations mission.

Recent Collaborations:

- Development of Meadow Management program for permittees impacted and/or displaced by wildfire in Harney County (in development phase)

National Association of Conservation Districts (NACD)

NACD Districts assists Harney SWCD by developing national conservation policies, influencing lawmakers, and building partnerships with other agencies and organizations. The NACD also helps Harney SWCD share ideas in order to better serve its local community.

Natural Resources Conservation Service (NRCS)

Harney SWCD works with the United States Department of Agriculture (USDA) NRCS to provide technical assistance to design and implement conservation practices throughout Harney County, approval for NRCS local practice plans, administrative services for local field staff and business.

Recent Collaborations:

- Oregon All Counties CCAA Steering Committee
- USDA Regional Conservation Partnership Program (RCPP)- \$9.0 grant award

Oregon Association of Conservation Districts (OACD)

The Oregon Association of Conservation Districts assists Harney SWCD by serving at the state level and speaking for issues relating to Harney SWCD. It cooperates with other public and private organizations, with purposes similar to the Harney SWCD, to adopt statewide policies and programs, which will effectively contribute to a quality environment and a productive economy.

Recent Collaborations:

- Oregon All Counties CCAA Steering Committee
- Collaborated during the development of Harney SWCD's 2015 business plan
- Provided trainings to staff on various natural resource and cooperative programs

Oregon Conservation Education and Assistance Network (OCEAN)

The Oregon Conservation Education and Assistance Network is a voluntary organization that sponsors SWCD employee trainings and workshops to increase professional development, social networking and SWCD capacity.

Recent Collaborations:

- OCEAN organizes the annual SWCD staff training (CONNECT) that Harney SWCD staff attend

Oregon Department of Agriculture (ODA)

Harney SWCD receives overall administrative oversight, partial administrative and technical support funding and small grant funding from the Natural Resources Division of the Oregon Department of Agriculture. Harney SWCD functions as the Local Management Agency (LMA) for SB1010, specifically the Agricultural Water Quality Management Act, 1993 and Greater Harney Basin Agricultural Water Quality Management Area Plan.

Recent Collaborations:

- Harney SWCD submits quarterly reports of work progress, annual reports of overall accomplishments, yearly work plans and financial status reports to ODA.
- Harney SWCD assists ODA staff with water quality violations in the county and offers assistance to landowners under violation of the agricultural water quality rules.

Oregon Department of Fish and Wildlife (ODFW)

ODFW assists Harney SWCD with technical assistance in stream restoration, fisheries data, and collaborates in project development and management.

Oregon Department of Forestry (ODF)

Harney SWCD communicates with ODF on many forestry issues associated with pre-commercial thinning projects on private timber land. Harney SWCD also ensures contractors are complying with ODF rules and laws surrounding Notification of Operation and Power Driven Machinery permits on SWCD funded projects.

Oregon Department of State Lands (DSL)

Harney SWCD works with DSL on a project by project basis. Our relationship has historically been based on individual DSL permittee grant applications.

Recent Collaborations:

- Harney SWCD administers a rental fleet of rangeland drills for DSL

Oregon State University (OSU) Extension Service

Harney SWCD works with OSU Extension to further their mutual goals of natural resource conservation, management and education by working closely with private property owners. The OSU Extension assists Harney SWCD in delivering efficient conservation programs.

Recent Collaborations:

- Oregon All Counties Sage grouse steering committee

Oregon Watershed Enhancement Board (OWEB)

The OWEB Board provides technical assistance, technical training and forums for communication among the watershed councils and Harney SWCD. OWEB also provides a vital restoration grant program for locally identified restoration projects.

Recent Collaborations:

- Harney SWCD staff serve on OWEB small grants review team
- Multiple Harney SWCD Program proposals have been funded by OWEB
- The majority of Harney SWCD's budget is dependent on OWEB funds

Property Owners/Operators

Harney SWCD assists property owners/operators with conservation planning, technical and/or financial assistance, watershed restoration and BMP implementation, farm bill program opportunities, natural resource concern assessments, and conservation-related questions through various working agreements.

Recent Collaborations:

- Property owners and operators are the primary beneficiaries and targets of our programs and partnerships. Harney SWCD staff carries out work such as invasive species control, riparian restoration projects, rangeland management projects, forest health, and ecosystem projects.

Malheur National Forest (Malheur NF)

Harney SWCD works with Malheur NF resource staff on many natural resource issues on private and public land in Harney County including invasive plant management and habitat restoration. Malheur NF provides funding through competitive Title II grants for portable solar watering systems.

Recent Collaborations:

- Harney SWCD and Malheur NF are partners in the Harney Cooperative Weed Management Area
- Harney SWCD and Malheur NF partner on projects relating to water quality improvement. These projects are typically initiated by the NF permittee and/or the range staff of the Malheur NF.

Soil and Water Conservation Commission (SWCC)

Soil and Water Conservation Commission has a major role to oversee the ODA grant programs that assist Harney SWCD. The Commission also provides assistance, direction, and coordination between Harney SWCD, the Natural Resources Division, NRCS, FSA, Oregon State University (OSU) Extension, OACD, and OWEB.

Watershed Council

Information sharing between Watershed Council and Harney SWCD as well as project collaboration continue to form strong partnerships.

Recent Collaborations:

- Serve as a team member on the Harney Small Grant Program team
- Harney SWCD staff serves on the Watershed Council board
- Continuous information sharing and project support between Harney SWCD Program and HCWC staff

The **Harney Soil & Water Conservation District 2015-2020 Long Range Business Plan** was **APPROVED and ADOPTED** by the Harney SWCD Board of Directors at the regular board meeting on June 25, 2015.

Chairman of the Board, Carol Dunten

Date

APPENDIXES

Appendix A: General Powers of Soil and Water Conservation District Directors

ORS 568.550(1). The board of directors of a soil and water conservation district has the following powers: [*Letters correspond to actual statute format.*]

- a. To secure surveys and investigations and do research relating to:
 - The character of soil erosion
 - The character of floodwater and sediment damage
 - All phases of the conservation, development, utilization and disposal of water
 - The preventive measures, control measures and improvements needed
- b. To conduct demonstrational projects on lands within the district upon obtaining the consent of the owner and occupier of such lands.
- c. To carry out preventive and control measures on lands within the district upon obtaining the consent of the owner and occupier of such lands.
- d. To enter into written agreements (*see specifics in 568.330[(d)][A]&[(B)]*)
- e. To obtain options upon and to acquire by purchase, exchange, lease, gift, grant, bequest or devise any property, real or personal or rights therein, (*see specifics in 568.330[e]*)
- f. To borrow money and to mortgage personal property of the district as security (*see specifics in ORS 568.330[ff]*)
- g. To issue general obligation bonds of the district as provided in ORS 568.803
- h. To make available, on such terms as the directors shall prescribe, to landowners or occupiers within the district, agricultural and engineering machinery and equipment, fertilizer, seeds and seedlings and other material or equipment.
- i. To construct, operate and maintain such structures as may be necessary or convenient for performance of any of the operations authorized in ORS 568.210 to 568.880 and 568.900 to ORS 568.933.
- j. To develop comprehensive plans and specifications for the conservation of soil resources and for the continued control of soil erosion within the district, and to publish such plans, specifications and information and bring them to the attention of owners and occupiers of the lands within the district.
- k. To take over, by purchase, lease or otherwise, and to administer, any soil conservation, erosion control or erosion prevention project, or combination thereof, located within district boundaries undertaken by the United States or any of its agencies, or by this state or any of its agencies.
- l. To manage, as agent of the United States or any of its agencies, or of this state or any of its agencies, any soil conservation, erosion control or erosion prevention project, or combination thereof, within district boundaries.
- m. To act as agent for the United States or any of its agencies, in connection with the acquisition, construction, operation or administration of any soil conservation, erosion control or erosion control project, or combination thereof, within district boundaries.
- n. To accept donations, gifts and contributions in money, services, materials, or otherwise from the United States or any of its agencies, or from this state or any of its agencies, and to use or expend such moneys, services, materials or other contributions in carrying on its operations.
- o. To sue and be sued in the name of the district, to have a seal, which shall be judicially noticed, to have perpetual succession unless terminated as provided by law, to make and execute contracts and other instruments necessary or convenient to the exercise of its powers, and to make, and

- from time to time amend or repeal, rules not consistent with ORS 568.210 to 568.808 and 568.900 to 568.933 to carry into effect its purposes and powers.
- o. To purchase liability or indemnity insurance, in such amounts and containing such terms and conditions as the board believes necessary for the protection of directors, officers and employees of the district against claims incurred in the performance of their duties.
 - q. To place liens on real and personal property.
 - r. To enter into written agreements with, coordinate activities with and provide assistance to landowners, managers and residents within the districts and federal, state and local governments, relating to natural resource issues, including but not limited to issues of:
 - Agriculture and forestry
 - Economic development based upon natural resources
 - Watershed management and ecosystem health
 - Invasive species
 - Alternate and renewable energy
 - Air Quality
 - Animal waste and nutrient management
 - Carbon sequestration
 - Access to market-based services and certification
 - Fuel reduction and wildfire planning and management
 - Preservation of agricultural, forestry and other lands
 - s. To conduct outreach and conservation education activities.
 - t. To provide financial assistance, including but not limited to loans and grants to implement activities and projects authorized under ORS 271.715 to 271.795, 569.210 to 568.808 or 568.900 to 568.933.
 - u. To hold patents, trademarks and copyrights.
 - v. To hold conservation easements under ORS 271.715 to 271.795.

ORS 568.550(2). As a condition to the extending of any benefits under ORS 568.210 to 568.808 or 568.900 to 568.933 to lands or the performance of work upon lands, the directors may require contributions in money, services, materials or otherwise to any operations conferring such benefits, and may require landowners or occupiers to enter into and perform such agreements or covenants as to the permanent use of such lands as will tend to prevent or control erosion thereon.

ORS 568.550(3). In order to avoid duplication of activities under subsection (1)(a) of this section, the department may call upon other state and federal agencies for assistance and cooperation in their fields in accordance with memoranda of understanding to be signed by all cooperating agencies.

ORS 568.550(4). A district may not adopt land use regulations under ORS chapter 197, 215 or 227. A district has the standing of an affected landowner to participate in the public process involving administrative rules, regulations, goals, guidelines, plans or other public body actions that may affect one or more properties within the district.

Appendix B: Statutes and Administrative Rules

The Harney SWCD is specifically governed by Oregon Revised Statutes (ORS) 568.210 through 568.890. In addition, the Harney SWCD is subject, but not limited to, the conditions of several statutes and administrative rules as follows:

- ORS 568.900 through 568.933 (Agricultural Water Quality Management)
- ORS 561.395 (Soil and Water Conservation Commission)
- ORS 561.400 (Natural Resources Division)
- ORS 44.320 (Oath of Office)
- Oregon Constitution, Article XV, Section 3 (Oath of Office)
- ORS 190.003 through 190.110 (Intergovernmental Cooperation)
- ORS 192.001 (Public Records Policy)
- ORS 192.005 through 192.190 (Custody and Maintenance Records)
- ORS 192.310 (Records and Reports)
- ORS 192.410 (Inspection of Public Records)
- ORS 192.610 through 192.710 (Public Meetings)
- ORS 198.010 through 198.955 (Special Districts)
- ORS 198.330 through 198.365 (Dissolution of Inactive Districts)
- ORS 198.410 through 198.440 (Recall)
- ORS 240.379 through 240.394 (Employment of Persons with Severe Disabilities)
- Title VII, Civil Rights Act of 1964 (Equal Opportunity Employment/Sexual Harassment/Discrimination) (Federal)
- Americans with Disabilities Act of 1990 (Hiring Persons with Disabilities) (Federal)
- ORS 244.010 through 244.4000 (Conflict of Interest)
- ORS 247.035 (Residency)
- ORS 294.305 through 294.565 (Local Budget) (required of districts with a tax levy)
- ORS 297.005 through 297.712 (Contracting)
- ORS 297.405 through 297.485 (Municipal Audits)
- ORS 542.750 (watershed Protection and Flood Prevention)
- ORS 659.010 through 659.990 (Employment Practices)
- ORS 659.405 (State Policy/Employment of Disabled Persons)
- OAR 839-07-550 through 839-07-656 (Sexual Harassment Prevention)

Appendix C: Acronyms used in this Business Plan

AWQMP	Agriculture Water Quality Management Program
BLM	Bureau of Land Management
BMP	Best Management Practices
CAFO	Confined Animal Feeding Operation
CREP	Conservation Reserve Enhancement Program
CRP	Conservation Reserve Program
CWMA	Cooperative Weed Management Area
DEQ	Department of Environmental Quality (Oregon)
DSL	Department of State Lands (Oregon)
EQIP	Environmental Quality Incentives Program
ESA	Endangered Species Act (Federal)
EWP	Emergency Watershed Protection Program
FSA	Farm Service Agency (formerly ASCS)
FTE	Full Time Equivalent Employee (2080 hrs/yr)
GIS	Geographic Information Systems
HEL	Highly Erodible Land
LAC	Local Advisory Committee
LMA	Local Management Agency (Oregon SB1010)
MOU	Memorandum of Understanding
NACD	National Association of Conservation Districts
NOAA	National Oceanic and Atmospheric Administration
NMFS	National Marine and Fisheries Service
NWMP	Northwest Weed Management Partnership
NRCS	Natural Resources Conservation Service (formerly SCS)
OACD	Oregon Association of Conservation Districts
OAR	Oregon Administrative Rule
OCEAN	Oregon Conservation Employees Association Network
ODA	Oregon Department of Agriculture
OFRI	Oregon Forest Resources Institute
ORS	Oregon Revised Statute
OSU	Oregon State University
OSWB	Oregon State Weed Board (ODA)
OWEB	Oregon Watershed Enhancement Board
RC&D	Resource Conservation and Development
RD	Rural Development (formerly Farmers Home Administration)
SCS	Soil Conservation Service (currently NRCS)
SDAO	Special Districts Association of Oregon
SB1010	Agricultural Water Quality Management Act of 1993 (OR)
SWCC	Soil and Water Conservation Commission
SWCD	Soil and Water Conservation District
USDA	United States Department of Agriculture
USFS	United States Forest Service
WHIP	Wildlife Habitat Incentives Program
WRP	Wetland Reserve Program

Appendix D: Current Fiscal Year Budget

HARNEY COUNTY SOIL & WATER CONSERVATION DISTRICT
Profit & Loss Budget Overview
 July 2015 through June 2016

	Jul '15 - Jun 16
Income	
Licenses & Permits	0.00
Lodging- Refund	0.00
Meetings/Meals/Workshops	0.00
MISC	0.00
Office Equipment	0.00
Rent- Deposit Refund	75.00
800 - Fiscal Yr Beg Balance	52,500.00
804 - State Funding	657,030.00
810 - Account Interest Income	98.00
815 - County Funding Income	11,000.00
820 - Donation/Memorial Income	0.00
825 - Equipment Rental Income	2,925.00
830 - Federal Funding Income	47,500.00
835 - Foundation Funding Income	0.00
840 - Fund Raising Income	0.00
845 - Herbicide/Chemical Income	0.00
850 - Landowner Matching Funds Income	2,000.00
855 - Municipal Income	0.00
860 - Other Program Income	139,000.00
865 - Over-Pyml. Income- State Refund	0.00
885 - Rangeland Drill Rental Income	650.00
890 - Seed Sales Income	0.00
895 - Tree Sales Income	2,500.00
896 - Administration Income	3,500.00
Total Income	918,776.00
Gross Profit	918,776.00
Expense	
600 - Payroll Expense	222,572.21
620 - Accounting	5,600.00
625 - Administration - HSWCD	9,500.00
630 - Advertising	994.37
650 - Contracted Services	451,500.00
655 - Director's Mileage	4,200.00
660 - Donations	0.00
665 - Dues/Memberships	2,450.00
670 - Education Materials	725.00
675 - Education/Training	3,100.00
680 - Employee purchase	0.00
685 - Equipment/Supplies	4,800.00
688 - Fuel/Gas/Diesel	600.00
690 - Health Ins. - Co. Contribution	15,000.00
695 - Herbicide/Chemical Supplies	8,000.00
700 - Insurance	4,580.00
705 - Lab Testing	0.00
708 - Landowner Matching- Expense	4,500.00
708 - Legal	13,400.00
710 - Licenses/Permits	0.00
715 - Lodging	1,100.00
720 - Meals/Meetings/Workshops	2,000.00
723 - Mileage	5,600.00
725 - Non-Operating Expense	0.00
730 - Office Furniture/Equipment	2,300.00
733 - Office Rent	1,900.00
735 - Office Supplies	3,531.08
737 - Per Diem	4,353.90
742 - Postage/Shipping	600.00
745 - Printing/Copying/Laminating	350.00
750 - Project Manager/Coordinator	14,000.00
755 - Project Mileage	0.00
761 - Project Production Costs	15,860.46
765 - Project Supplies & Materials	99,558.98
770 - Project Transfer	0.00
771 - Project Transportation	0.00
775 - Rangeland Drill	450.00
780 - Rent	2,250.00
785 - Repairs & Maintenance	2,520.00
790 - Seed Purchased	0.00
800 - Staff Mileage	300.00
805 - Telephone	2,100.00
810 - Tree Sale Expense	1,000.00
815 - Administration Expense	7,500.00
Total Expense	918,776.00
Net Income	0.00



2013

(

(

(



